

## 811\_RADAR\_CVT User Manual

811\_RADAR\_CVT is a simple utility to convert radar POI information from old radar format, integrated inside the map with other POI, to the new format for 8.11 software version, in which radar info are in some map independent files.

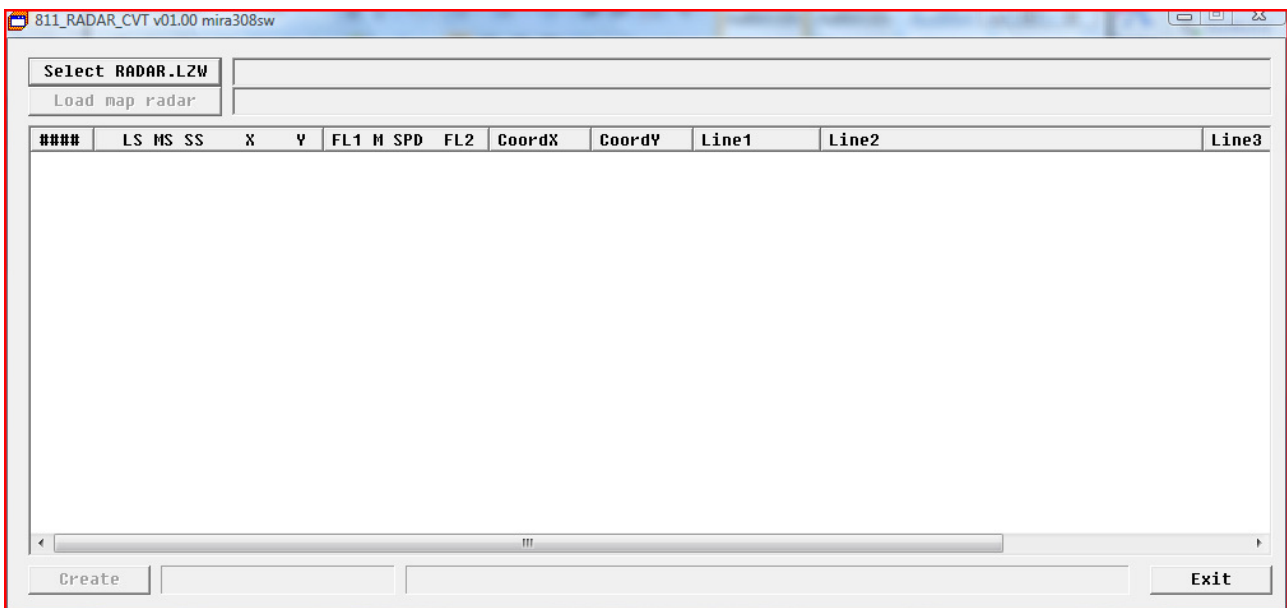
To use 811\_RADAR\_CVT you must have:

1. The original POI update disk from PSA
2. The original map disk with radar POI already loaded

### How to proceed with conversion

Create a new folder on your HDD and copy inside the POI update disk . Files in this new folder will be used and modified by the program.

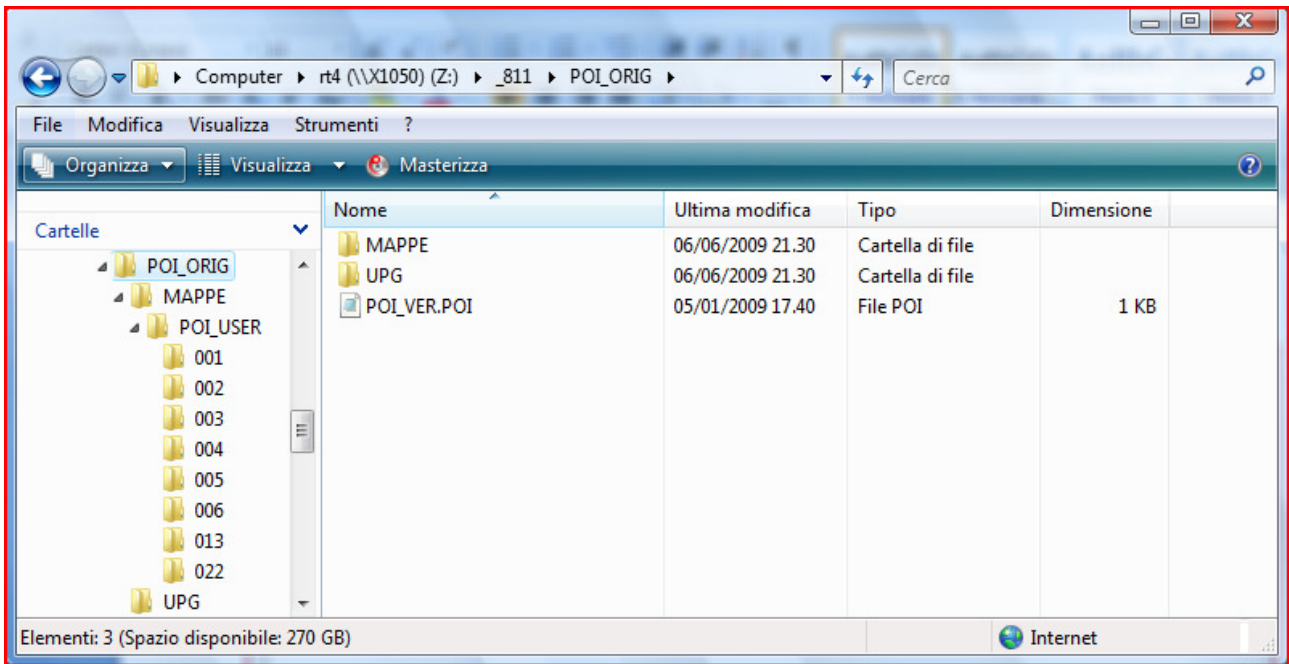
Run 811\_RADAR\_CVT, the program main page is like this:



Click on "Select RADAR.LZW" and choice the RADAR.LZW file of your country inside the POI folder.

You can also choice the file DANGERZ.LZW by change the file filter in the open file dialog.

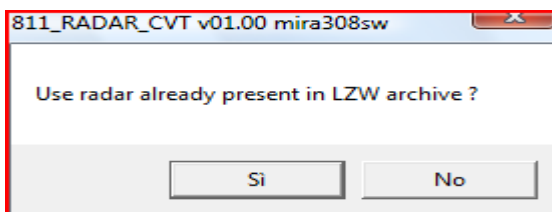
The POI update disk have a structure like this:



Use the file RADAR.LZW in the correct numeric folder, as follow:

001	ITALY
002	FRANCE
003	SPAIN/PORTUGAL
004	BENELUX
005	UNITED_KINGDOM
006	SCANDINAVIA
012	GERMANY
013	MIDDLE_EUROPE
020	SOUTHERN_EASTERN_EUROPE
021	NORTH_EAST_EASTERN_EUROPE
022	NORTH_WEST_EASTERN_EUROPE

You will prompted with request:



YES: will load the radar data present in the original POI update disk, and add the other radar to them.

NO: let you start to fill the radar database with the new information from map.

Now click on "Load map radar" and choice the file "??SAU.DST" in your original map update disk in the same numeric folder used above (=same country).

If you had selected the file RADAR.LZW as destination, all the POI present in map with icon RADAR\_CONTROL will be added to the displayed list.

If you had selected the file DANGERZ.LZW as destination, all the POI present in map with icon DANGEROUSE\_ZONE will be added to the displayed list.

The other POI present in map file will be ignored.

**Every time you load a map POIs they will be added to the displayed list.**

**811\_RADAR\_CVT don't check if some radar are duplicated or overlapped with others, and don't check if you are loading POI from a country different from LZW destination file.**

**Radar speed is set to the first numeric value found in the text field.**

Finally click on "Create" and the destination files will be created in the new file format for 8.11 RT4/RT5 software.

To load the created radar database in your RT4/RT5 simply copy all files in the new folder to an usb device or burn them on CD. You can also copy only the country you have modified, deleting the numeric folder you don't modify and leave all other files and folder structure.

## Notes

Since I am the last arrived in the RTX world, i must specify that my work is based on what has been done by others people before me, to which I want to thank:

**dmatos** for the info given to me in private, and those present in his wiki page  
<http://rt4.wikidot.com>

**Janfi67** for the info given to me in private and for all programs and documents he made public on  
<http://www.planete-citroen.com>

all users of the forums that I attend, that shared with the others information in their possession  
<http://www.passionepeugeot.it>      <http://www.citroen-c-club.com>  
<http://www.c4atreros.es>      <http://www.eurovan2.com>